

# Beginning

---

First of all, thanks for buying PolarFIS, throughout this manual we are going to explain how to install your new PolarFIS.

To install PolarFIS, you will need the following tools:

- Plastic bridles to hold PolarFIS device

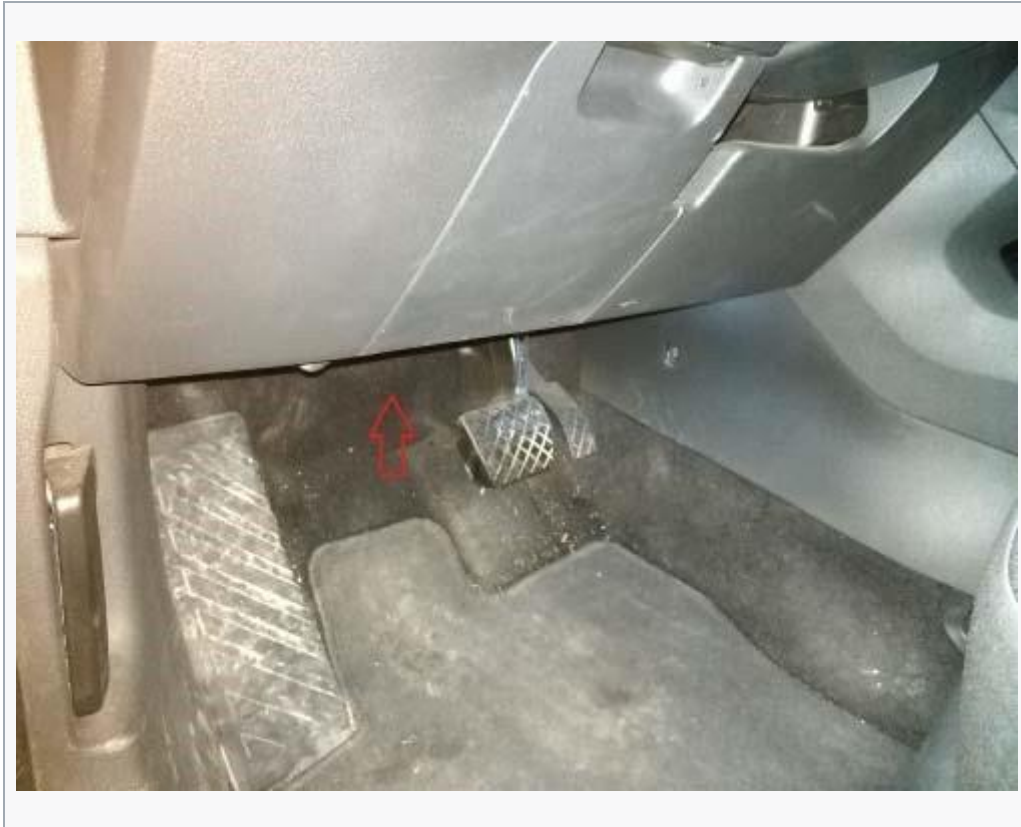
After this, check that your PolarFIS unit have the last firmware version available for your vehicle, or not will appear nothing in your FIS display. There are different firmwares for different platforms and display, so it is very important have the correct one. For upgrade your device to the last version, go to the official website [AutoPolar](#) and download the [UpdaterTool software](#). You will find a direct link at the upper position of this website.

**IMPORTANT :** Because during the PolarFIS installation some elements of the vehicle, like the lighting system control and the Gateway must be disconnected, it is advised to disconnect the battery before coming to the installation.

# Disassembling

---

For the installation of your PolarFIS, in this case, you not will need to disassemble any plastic or component. The gateway is directly over the pedals and is very easy to access in this model. (see the image below)



Now, put your head on the pedals, look up and you will see the Gateway there. (see the image below)



# Connecting your PolarFIS

---

**IMPORTANT :** Before coming to connect PolarFIS, it is advised to disconnect the battery of the vehicle or in lack of that, to remove the contact of the vehicle since the Gateway is the central unit that interconnects all the electronic modules of the vehicle.

Now we must connect the Gateway connection to PolarFIS, and after then, PolarFIS to the Gateway of the car, therefore to make a "bridge". After this, you will have already connected your PolarFIS, now you will have to fix it with the aid of plastic bridges.

**IMPORTANT :** Make sure that the connectors are perfectly fitted, once you have connected your PolarFIS.

## Finishing installation

---

Before returning to place the equipped ones, connect the vehicle battery and put the contact in order to verify that you have a new menu called PolarFIS within FIS screen of your vehicle. If you are not able to accede to this screen, it is probably that there is a loose or wrong place connector, you should verify again that everything is correctly connected. Once you have made this verification, remove the contact of the vehicle and comes to mount all the disassembled pieces again, following the same steps but the other way round.

**IMPORTANT :** You should take into account that after disconnecting the battery of your vehicle, perhaps the memory of some accessories is loosened, as for example the windows or the limits of the power-assisted steering.

In the **case of the windows**, you will have to put each window down until the end, and later you must put it up again so that the ECU of the door memorise all the possible positions. This process must be done in each window of the vehicle.

In the **case of the power-assisted steering**, if failure lights are on, you may do the following: With the car stopped, slowly turn the steering wheel until the left limit and keep it only few seconds. Secondly, turn it again until the right limit and keep it because later you have to turn again the steering wheel until its central position. Finally, drive some meters with the steering wheel totally straight and the failure lights of power-assisted steering will disappear. Now you can erase the errors with the VAGCOM and the process will end.

From that moment on, the process of PolarFIS installation will have finished

